

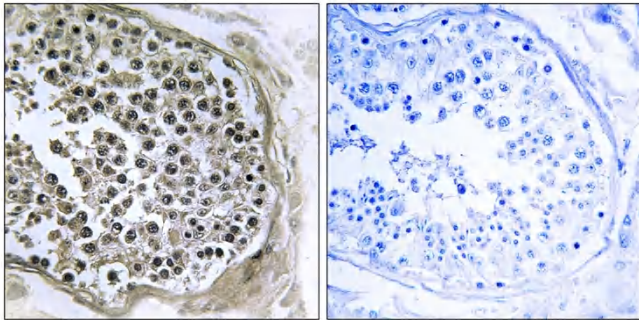


# GIDRP88 Polyclonal Antibody

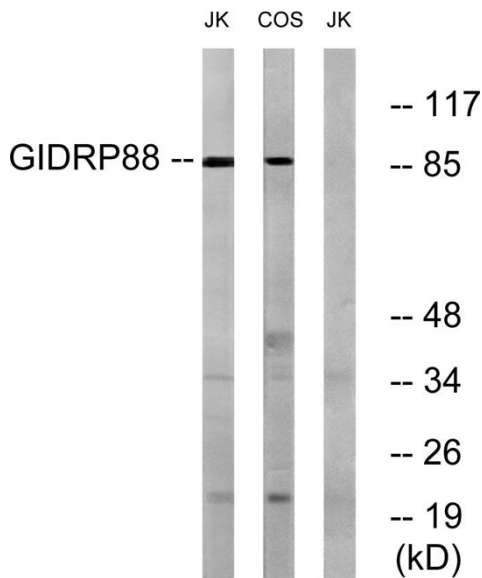
<b>Catalog No</b>	YP-Ab-01749
<b>Isotype</b>	IgG
<b>Reactivity</b>	Human;Mouse;Monkey
<b>Applications</b>	WB;IHC;IF;ELISA
<b>Gene Name</b>	R3HCC1L
<b>Protein Name</b>	R3H and coiled-coil domain-containing protein 1-like
<b>Immunogen</b>	The antiserum was produced against synthesized peptide derived from human GIDRP88. AA range:721-770
<b>Specificity</b>	GIDRP88 Polyclonal Antibody detects endogenous levels of GIDRP88 protein.
<b>Formulation</b>	Liquid in PBS containing 50% glycerol, 0.5% BSA and 0.02% sodium azide.
<b>Source</b>	Polyclonal, Rabbit,IgG
<b>Purification</b>	The antibody was affinity-purified from rabbit antiserum by affinity-chromatography using epitope-specific immunogen.
<b>Dilution</b>	WB: 1/500 - 1/2000. IHC: 1/100 - 1/300. ELISA: 1/40000.. IF 1:50-200
<b>Concentration</b>	1 mg/ml
<b>Purity</b>	≥90%
<b>Storage Stability</b>	-20°C/1 year
<b>Synonyms</b>	R3HCC1L; C10orf28; GIDRP88; R3H and coiled-coil domain-containing protein 1-like; Growth inhibition and differentiation-related protein 88; Putative mitochondrial space protein 32.1
<b>Observed Band</b>	88kD
<b>Cell Pathway</b>	exon-exon junction complex,
<b>Tissue Specificity</b>	Expressed in placenta.
<b>Function</b>	tissue specificity:Expressed in placenta.,
<b>Background</b>	tissue specificity:Expressed in placenta.,
<b>matters needing attention</b>	Avoid repeated freezing and thawing!
<b>Usage suggestions</b>	This product can be used in immunological reaction related experiments. For more information, please consult technical personnel.



## Products Images



Immunohistochemistry analysis of paraffin-embedded human testis tissue, using GIDRP88 Antibody. The picture on the right is blocked with the synthesized peptide.



Western blot analysis of lysates from Jurkat and COS cells, using GIDRP88 Antibody. The lane on the right is blocked with the synthesized peptide.